

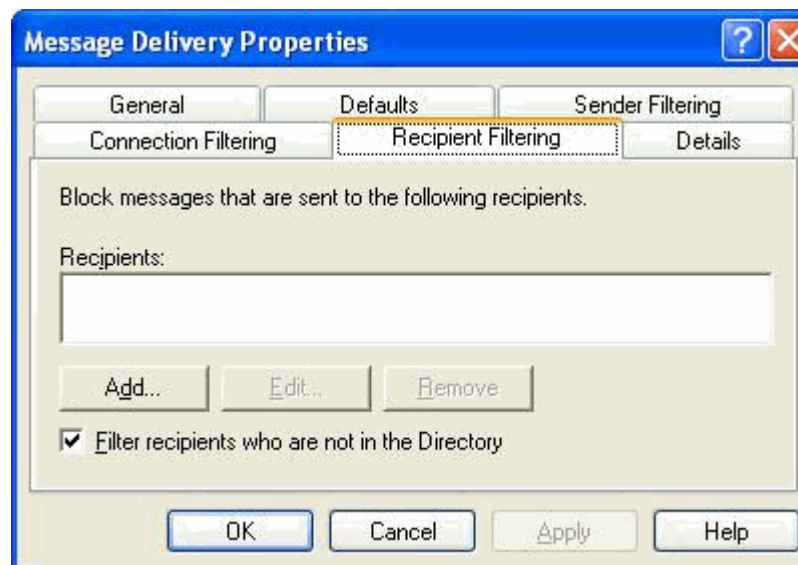
Exchange 2003 – Inbound Email Setup

Accept inbound email ONLY for valid users

By default, Exchange would accept incoming email for any address (including bogus ones) in your domain. Unfortunately, this default setting causes unnecessary burden on system resources, but also creates potential security vulnerabilities. Therefore, it is important to configure your Exchange server to properly reject incoming emails addressed to unknown users.

Step 1:

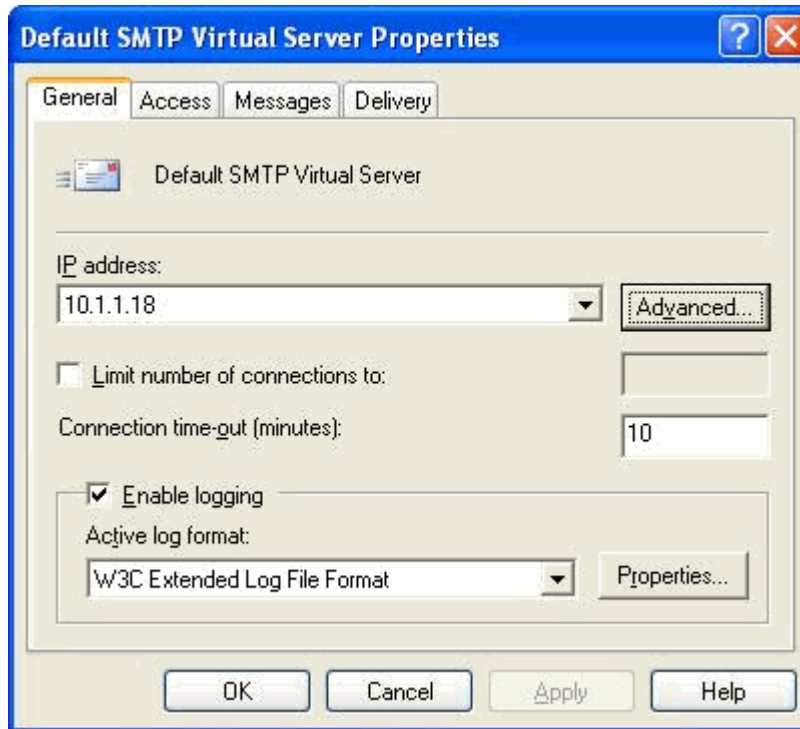
- Open up **System Manager**
- Expand **Global Settings**
- Right-click on **Message Delivery**, and go to **Properties**
- Click the **Recipient Filtering** tab
- Check **Filter recipients who are not in the Directory**
- Click **OK**



Step 2:

- Expand **Administrative Groups**
- Expand **Your Site**
- Expand **Servers**

- Select the Server you want
- Expand **Protocols**
- Expand **SMTP**
- Right-click on **Default SMTP Virtual Server** and go to Properties



Step 3:

- Select your IP address
- Click the **Advanced** tab
- With you IP address selected, click **Edit**
- Check **Apply Recipient Filter**
- Click **OK**, and close all the boxes
- Restart the server

