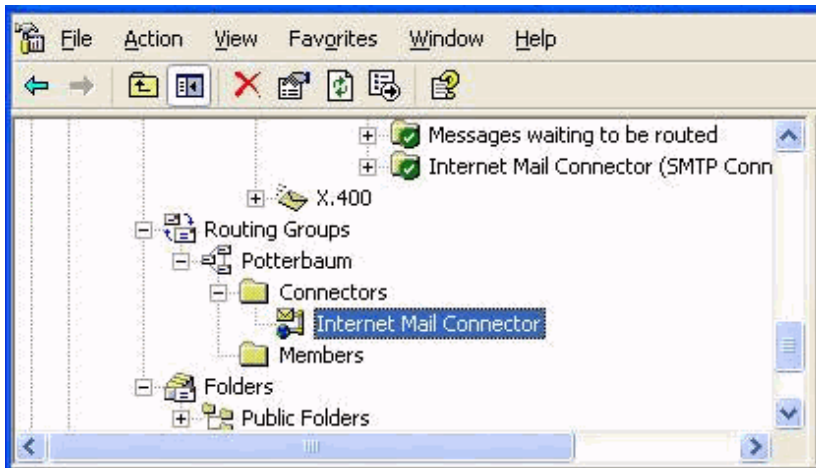


Exchange 2003 – Outbound Email Setup

The Exchange Server Administrator program has a **Connector** tab that lets you specify how to route outbound mail - whether Exchange will send emails directly to the recipients system (using DNS); or if all emails should be relayed through an external "smart host", such as Puremail secure SMTP relay server.

Step 1:

- Open up **System Manager**
- Locate the **Routing Groups** folder (if it is not visible, navigate to the top, then right click Exchange Organization, properties, click Display Routing Groups. Then simply re-open the System Manager)



Step 2:

- Expand and right click the **Internet Mail Connector** (or **SMTP**)
- Click on **Properties**
- Select the **General** tab
- Check **Forward all mail through this connector to the following smart hosts**
- In the box below, enter the Puremail smart host: **smarthost.puremail.com**
- Click **OK**, and close all the boxes
- Restart the server

