

## Exchange 2007 – Inbound Email Setup

For Exchange 2007, Microsoft has split up various jobs that Exchange has to perform - into separate roles: Mailbox, Client Access Server, Hub Transport, Edge Transport and Unified Messaging. If you have a single server machine running Exchange 2007, the **Hub Transport** role is the one responsible for sending and receiving external emails. This article describes how to configure the **Hub Transport** in order to secure your inbound email.

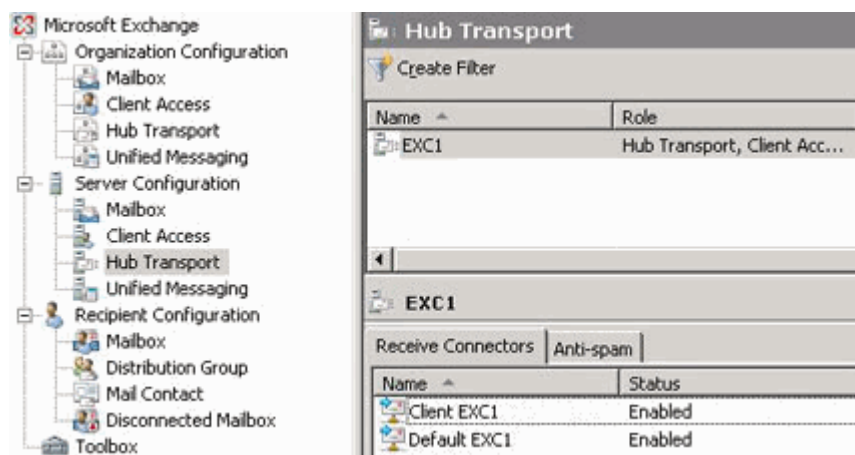
### Accept inbound email ONLY from Puremail secure servers

Puremail acts as your external watch-guard which receives, examines and filters all your incoming email that arrives via the Internet. Therefore, it is best to lock down your Exchange server so that it accepts email delivery ONLY from Puremail secure servers, and rejects all other external email coming in via the Internet.

If your Exchange Server 2007 is currently able to receive external email via the Internet, a **Receive Connector** must already have been created and configured correctly on the Hub Transport server. Therefore, you just need to modify the settings on this Receive Connector in order to accept your inbound email ONLY from Puremail secure servers.

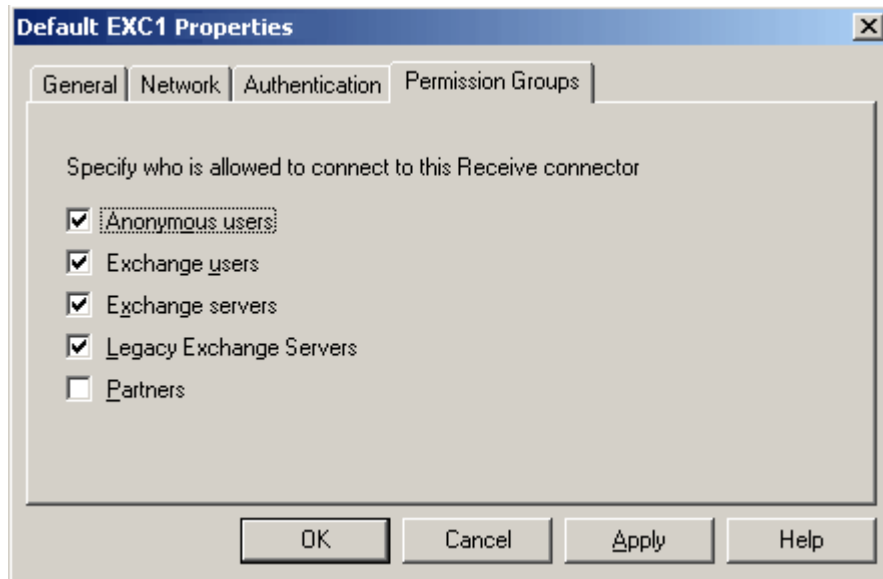
#### Step 1:

- Open the **Exchange Management Console**, then click on **Server Configuration**
- Select the **Hub Transport**, then select your server
- You'll see the **Receive Connectors** tab (at the bottom of right panel)
- By default, there are two Receive Connectors in Exchange Server 2007. The first one is labeled "Client *Server-Name*", and the second one is labeled "Default *Server-Name*" (where *Server-Name* is the Netbios name of your Exchange Server). You need to review and change the settings of the "Default *Server-Name*" Receive Connector



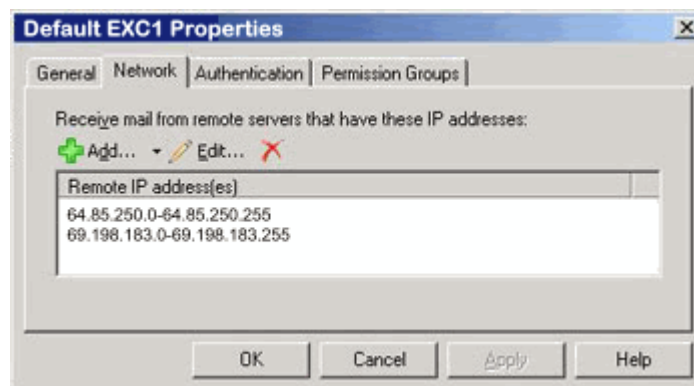
**Step 2:**

- Setup "Default *Server-Name*" Receive Connector to allow anonymous connection
- Right-click on "Default *Server-Name*" Receive Connector and then click Properties
- Go to **Permissions Group** tab
- Add the "Anonymous users"



**Step 3:**

- Go to **Network** tab on the Properties window of the "Default *Server-Name*" Receive Connector
- Select "**Receive mail from remote servers that have these IP addresses:**"
- Add Puremail's secure IP addresses provided to you by your Puremail account manager
- Remove other IP addresses in order to block direct email delivery from unknown external sources
- Click on **Apply / OK**

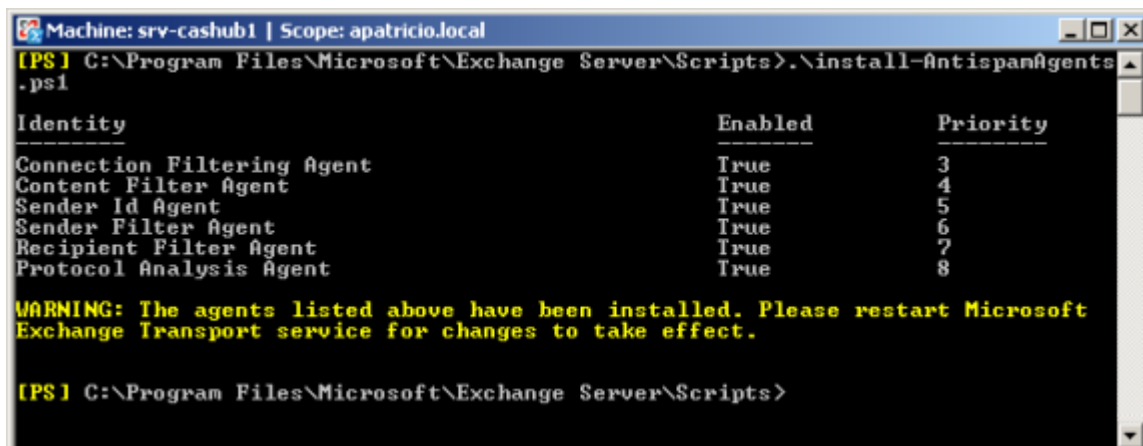


## Accept inbound email ONLY for valid users

By default, Exchange would accept incoming email for any address (including bogus ones) in your domain. Unfortunately, this default setting causes unnecessary burden on system resources, but also creates potential security vulnerabilities. Therefore, it is important to configure Exchange 2007 to properly reject incoming emails addressed to unknown users. This feature is available as part of the Anti Spam Transport Agents in the **Edge** role of Exchange 2007. However, in a single server deployment, this functionality needs to be installed by running a script.

### Step 1:

- Open the **Exchange Management Shell**
- Go to the Exchange Server 2007 installation folder (the default path is c:\Program Files\Microsoft\Exchange Server)
- Go to the **Scripts** subfolder
- Run the script called **Install-AntiSpamAgents.ps1**
- Restart the **Microsoft Exchange Transport Service**



```
Machine: srv-cashub1 | Scope: apatricio.local
[PS] C:\Program Files\Microsoft\Exchange Server\Scripts>.\install-AntispamAgents
.ps1

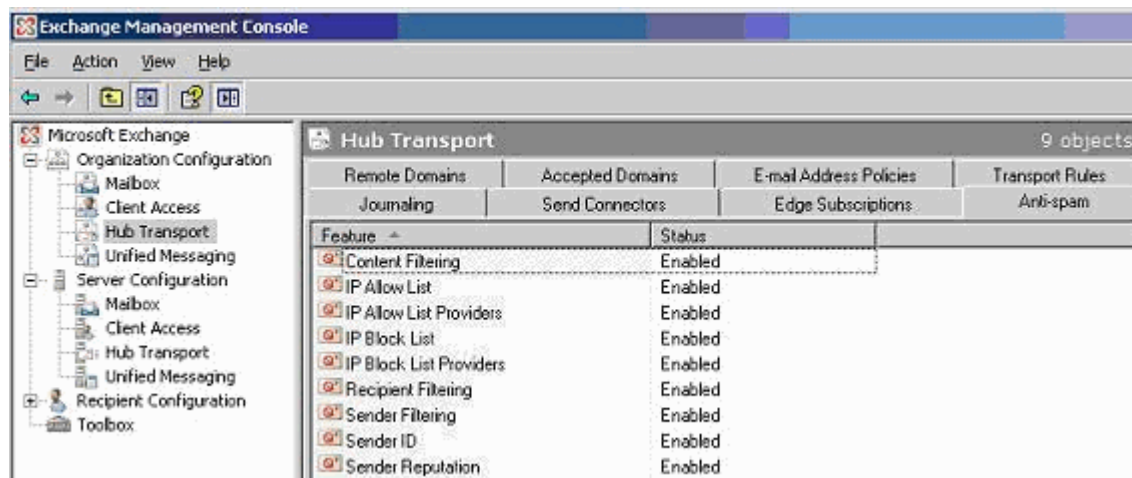
Identity                               Enabled  Priority
-----
Connection Filtering Agent             True     3
Content Filter Agent                   True     4
Sender Id Agent                        True     5
Sender Filter Agent                    True     6
Recipient Filter Agent                  True     7
Protocol Analysis Agent                 True     8

WARNING: The agents listed above have been installed. Please restart Microsoft
Exchange Transport service for changes to take effect.

[PS] C:\Program Files\Microsoft\Exchange Server\Scripts>
```

### Step 2:

- Open the **Exchange Management Console**, then click on **Organization Configuration**
- Select the **Hub Transport**, and go to **Anti-spam** tab



**Step 3:**

- All of the anti-spam options are enabled by default. Since Puremail is already providing you the most advanced filtering, you may disable them all - except for Recipient Filtering
- Double click **Recipient Filtering**
- Select the **Blocked Recipients** tab
- Check the first option “**Block messages sent to recipients not listed in the Global Address list**”



- Click on **Apply / OK**
- Restart the **Microsoft Exchange Transport Service** again