

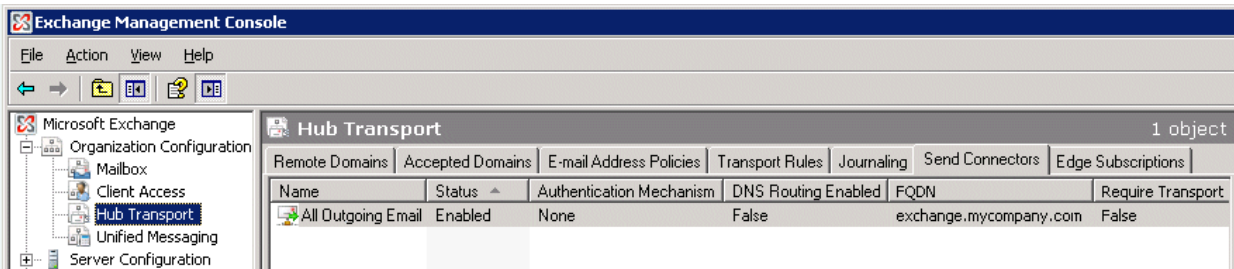
Exchange 2007 – Outbound Email Setup

For Exchange 2007, Microsoft has split up various jobs that Exchange has to perform - into separate roles. If you have a single server machine running Exchange 2007, the **Hub Transport** role is the one responsible for sending and receiving external emails.

If your Exchange Server 2007 is currently able to send emails externally, a **Send Connector** must already have been created and configured correctly on the Hub Transport server. Therefore, you just need to modify the settings on this Send Connector in order to relay your outbound email thru an external "smart host", such as Puremail secure SMTP relay server.

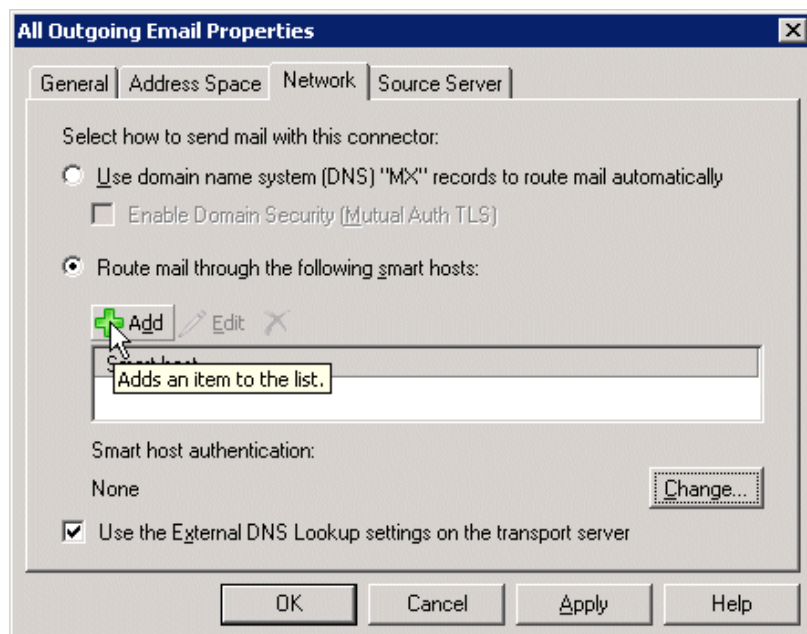
Step 1:

- Open **Exchange Management Console**, then click on **Organization Configuration**
- Select **Hub Transport** and select the **Send Connectors** tab



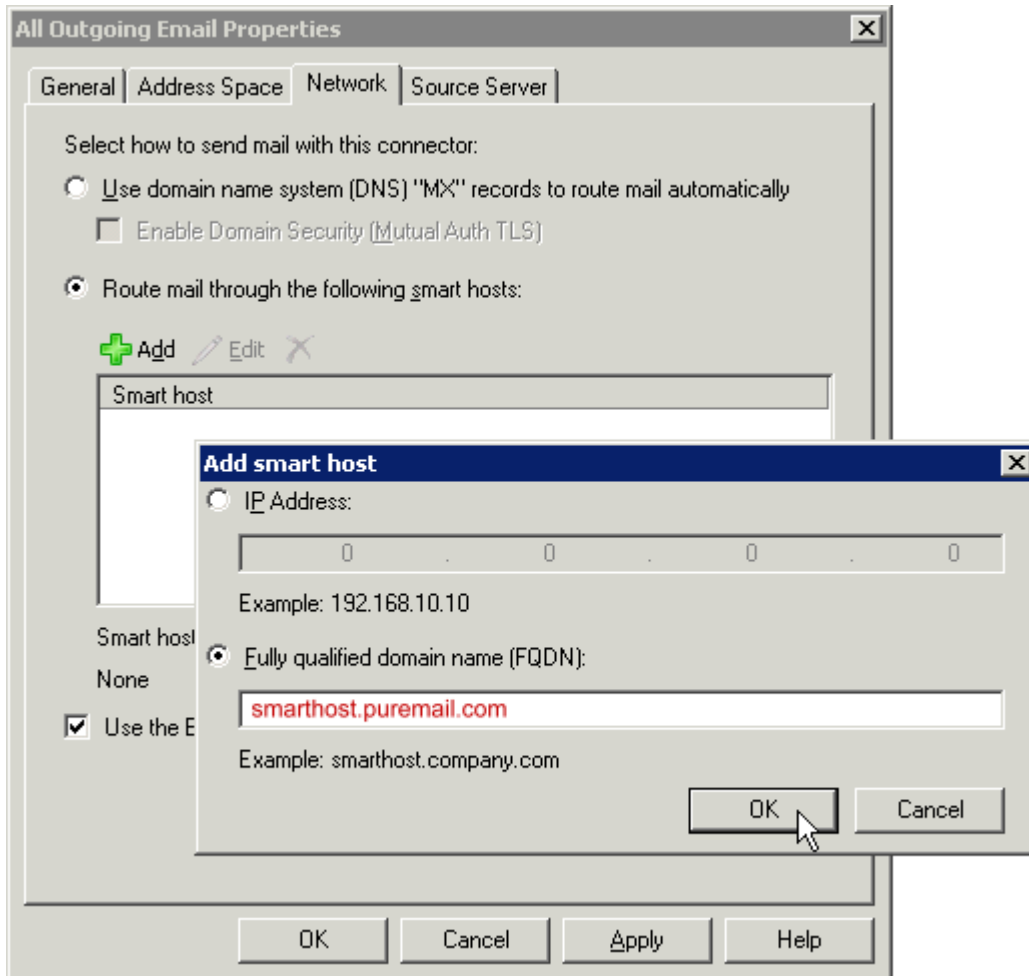
Step 2:

- Right-click on the existing **Send Connector**
- Select **Properties**
- Go to the **Network** tab
- Check **Route mail through the following smart hosts:**
- Click **Add**
- A pop-up window "Add smart host" will appear



Step 3:

- Enter Puremail smart host: **smarthost.puremail.com**
- Click **OK** to close “Add smart host” window
- Click **OK** to close “Add Outgoing Email Properties” window



There shouldn't be anything that needs changing on the other 3 tabs.

The changes you've made to the **Send Connector** will take effect right away without any need to reboot the server or restart any services.